
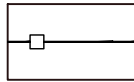


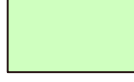


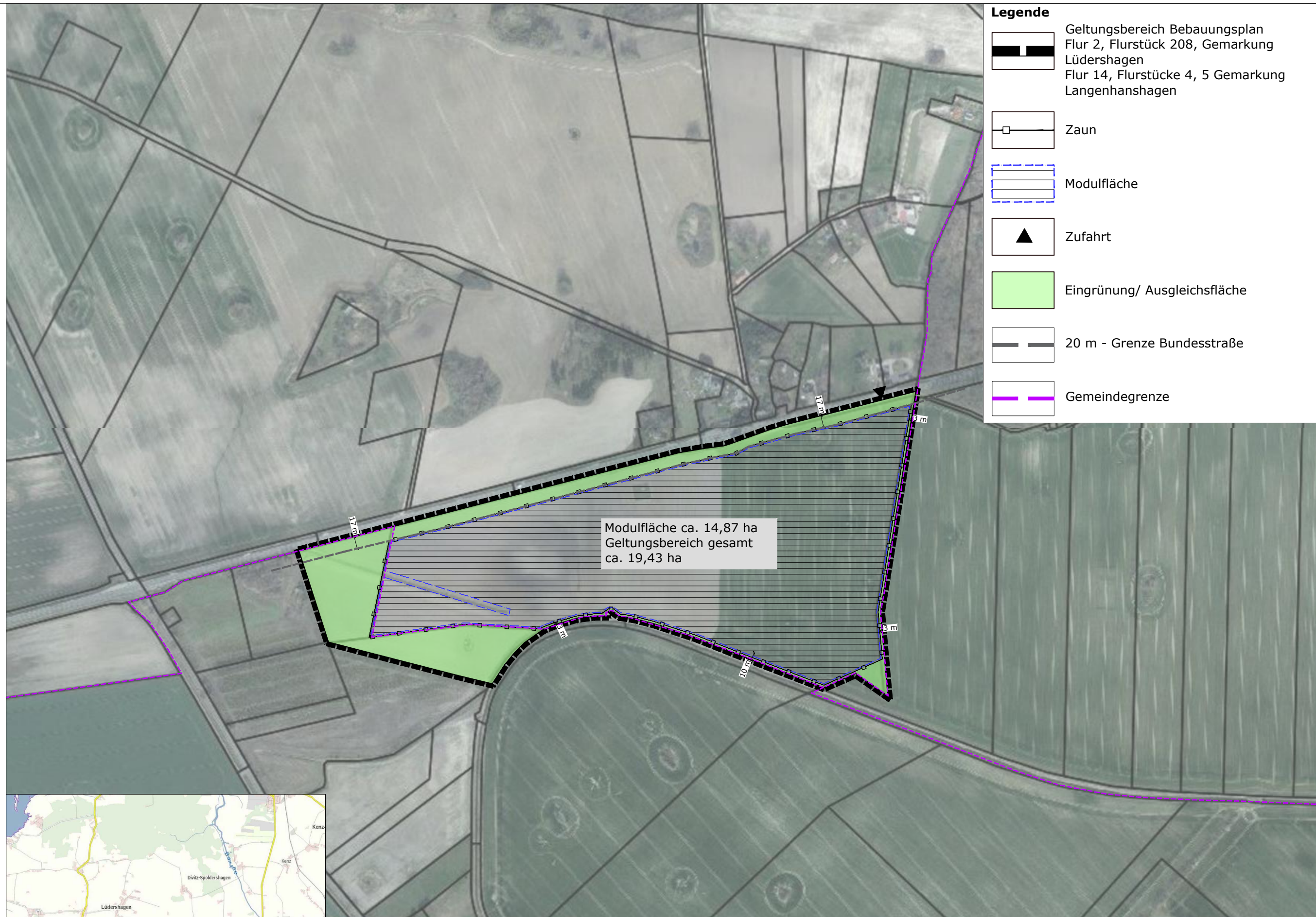
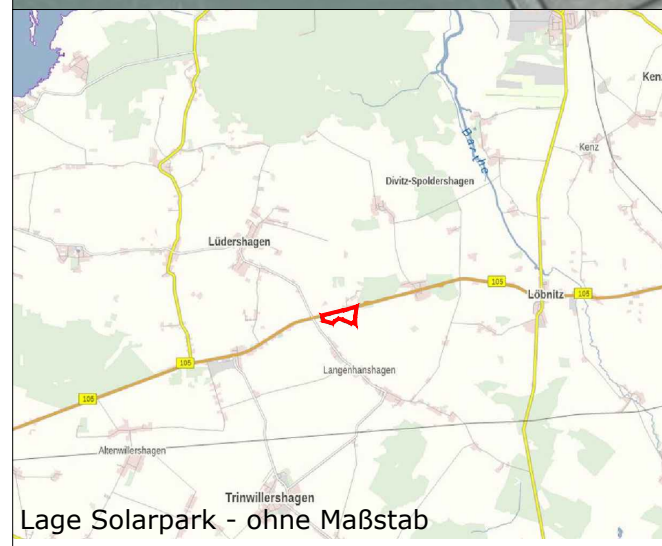


Legende

-  Geltungsbereich Bebauungsplan
Flur 2, Flurstück 208, Gemarkung
Lüdershagen
Flur 14, Flurstücke 4, 5 Gemarkung
Langenhanshagen
-  Zaun
-  Modulfläche
-  Zufahrt
-  Eingrünung/ Ausgleichsfläche
-  20 m - Grenze Bundesstraße
-  Gemeindegrenze



Modulfläche ca. 14,87 ha
Geltungsbereich gesamt
ca. 19,43 ha



Skizze-PV Lüdershagen.dwg

Lage Solarpark - ohne Maßstab

VORENTWURFSSKIZZE SOLARPARK LÜDERSHAGEN II



BAUVORHABEN:
vBBP Solarpark Lüdershagen II

BAUHERR:
Anumar Solar GmbH
Hauwöhrrer Straße 21 - 85051 Ingolstadt

DATUM:
14.10.2021

MASSSTAB:
1 : 5.000

